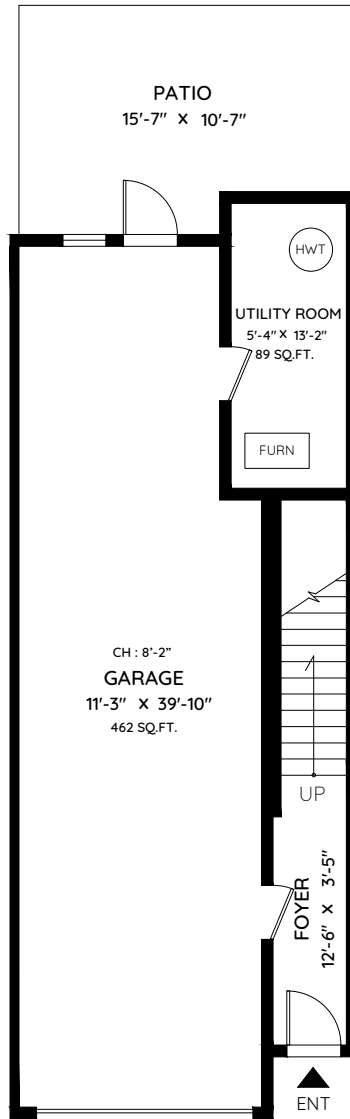
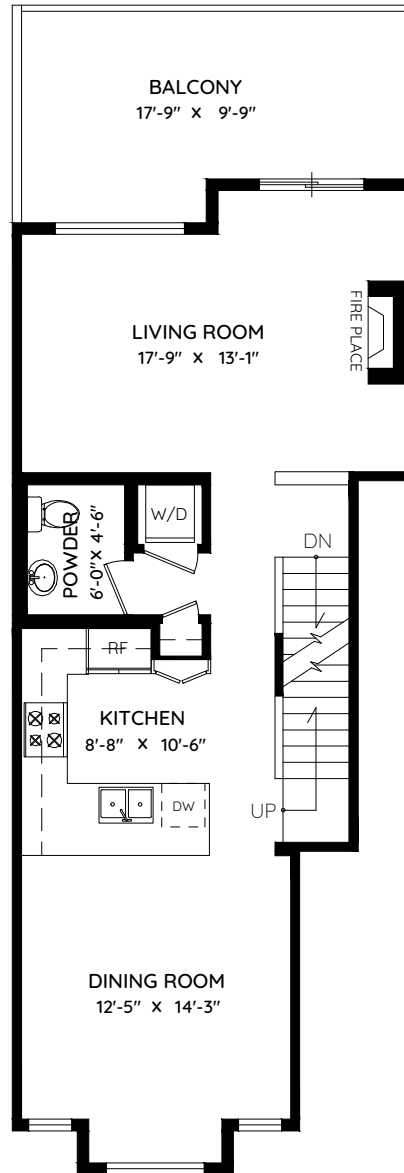


35 - 100 WOOD STREET

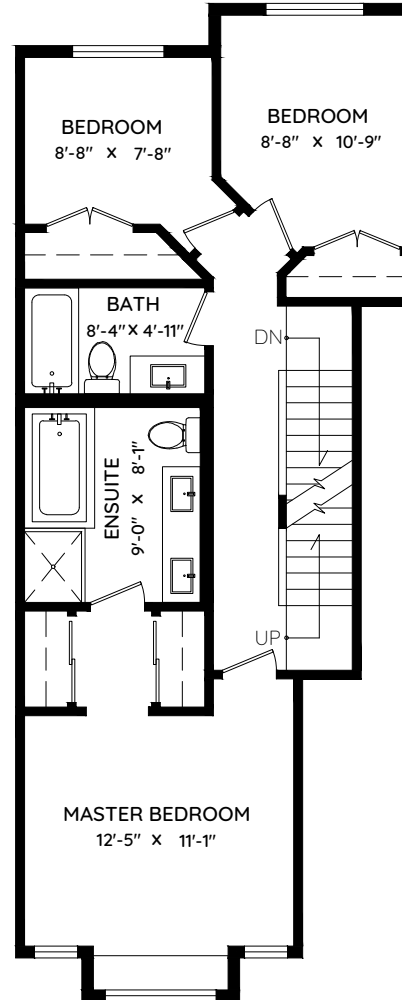
NEW WESTMINSTER, BC



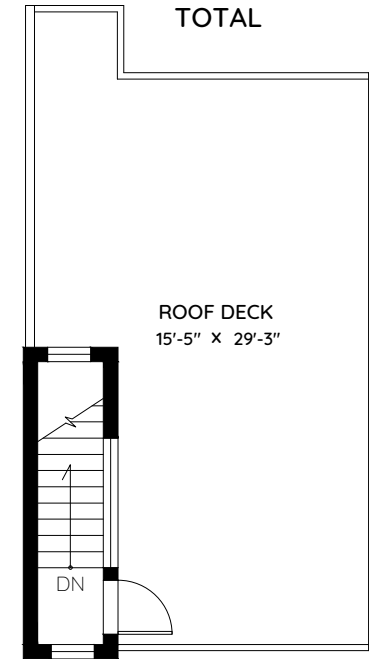
LOWER FLOOR
102 SQ.FT.
CH: 7'-10"



MAIN FLOOR
701 SQ.FT.
CH: 9'-7"



UPPER FLOOR
743 SQ.FT.
CH: 8'-5"



ROOF DECK
15'-5" X 29'-3"

MAIN	701 SQ.FT.
UPPER	743 SQ.FT.
LOWER	102 SQ.FT.
TOTAL	1,546 SQ.FT.
GARAGE (with UTIL.)	551 SQ.FT.
BALCONY	167 SQ.FT.
PATIO	152 SQ.FT.
ROOF DECK	389 SQ.FT.
TOTAL	1,259 SQ.FT.



0 ft 3 ft 5 ft 10 ft



The floor plan and the measurements are approximate and are to be used for advertising usage only.
Not suitable for architectural or construction. E&O Insured